



KIHE

Kingsford Institute
of Higher Education

Provider ID: PRV14399 | **CRICOS Code:** 04352K

DEAN'S WELCOME



On behalf of the entire team at Kingsford Institute of Higher Education (KIHE), it gives me great pleasure to extend a warm welcome to all newcomers and to invite you to delve into our digital world through our website.

At KIHE, technology is at the core of everything we do. Our curriculum is crafted to align with the latest global trends and advancements in information technology (IT), embedding cutting-edge developments in artificial intelligence, machine learning and cyber security into the fabric of IT education. This approach ensures that our students are not just learning about IT, but are fully immersed in it, prepared to lead in the digital age.

Education at KIHE is about igniting a lifelong passion for learning and equipping students with the resilience and adaptability needed to navigate the complexities of the modern world. Our dedicated faculty and staff are committed to providing practical, tech-centered pathways that ready you for the challenges and opportunities of the tech industry. Through our pursuit of academic excellence and focus on nurturing curious minds, we aim to empower you to achieve your intellectual and professional goals, enabling you to make significant, lasting contributions to your professional fields and communities.

As you embark on your educational journey with us, I encourage you to take full advantage of the support and guidance our faculty and staff offer. We are here to assist you every step of the way. The KIHE community is a welcoming and supportive environment, and together, we are capable of achieving extraordinary things. Remember, every question is a step towards understanding; there are no irrelevant inquiries.

I invite you to explore our website for more information on our programs, and to get acquainted with our faculty and staff. Should you have any questions or require additional information, please feel free to reach out to us at 1800 544 300, or contact me directly at dean@kihe.nsw.edu.au

Mehregan Mahdavi PhD
Dean

BACHELOR OF INFORMATION TECHNOLOGY

CRICOS Course Code:117720G

Supercharge your IT career by unlocking the vital knowledge, skills and strategies surrounding the development and application of information technologies.

The Course

Kingsford Institute of Higher Education (KIHE) proudly introduces our newly accredited Bachelor of Information Technology (BIT) program, designed to meet the burgeoning demand for skilled IT professionals in today's digitised world.

Developed with meticulous attention to detail and undergoing rigorous rounds of expert review, this program is offered in Sydney, marking a significant milestone in IT higher education. In an era where Information Technology underpins every aspect of business, the BIT program is tailored to empower future professionals with the specialized knowledge and skills essential for navigating and leading in competitive markets.

The decision to launch the BIT stems from both current trends and forward-looking projections indicating a robust employment growth within the IT sector in Australia and globally. This growth is accompanied by a significant shortfall of IT professionals, a gap that our program aims to fill. Insights from Australia's Digital Pulse reports for 2021 and 2022 highlight a 7.0% growth in ICT-related occupations and predict an average annual growth rate of 5.5% in the technology workforce through 2027. This underscores the critical need for IT education that not only addresses current shortages but also anticipates the evolving demands of the technology landscape.

Our Bachelor of Information Technology is comprehensive, covering key areas such as computational theory, computer programming, systems analysis, data management, networking, artificial intelligence, cybersecurity, and data analysis. This robust curriculum ensures that graduates are not only versed in the theoretical underpinnings of the discipline but also possess the practical skills to apply their knowledge in real-world contexts. The program aims to cultivate well-rounded professionals equipped with cognitive skills, decision-making abilities, effective communication strategies, and a deep understanding of their personal and professional responsibilities.

As part of the course structure, students have the opportunity to deepen their knowledge and skills in a chosen area by selecting units from one of the following streams:

- **Cyber Security**
- **Data Analytics**

Graduates of the BIT program are poised to enter a variety of IT-related fields, including software development, database management, network administration, cybersecurity, and data analysis. With a focus on developing industry-relevant skills and knowledge, KIHE's BIT program positions its graduates for success and leadership in the dynamic and rapidly evolving IT industry. We are excited to offer this program as a pathway for aspiring IT professionals to achieve their career goals and contribute meaningfully to the technology-driven future.

Accreditation

Our degree program is accredited by Australia's Tertiary Education Quality and Standards Agency (TEQSA) and fully aligned with the AQF (Australian Qualifications Framework).

Once the program is fully established, KIHE will seek accreditation from the Australian Computer Society.

Admission Requirements

Applicants must have successfully completed:

- Year 12 in Australia with a minimum ATAR (or equivalent) of 60; OR
- The equivalent to an Australian Year 12 at a recognised overseas institution with an equivalent minimum ATAR of 60; OR
- A Certificate IV (AQF 4) or higher awarded by a recognised higher education/ vocational institution; OR
- A General Certificate of Education Advanced Level (GCE A) with three or more C Grades; OR
- A Global Assessment Certificate with an average Grade of 65% or higher; OR
- An International Baccalaureate.

English language requirements for Bachelor of Information Technology entry:

- IELTS Academic: overall band score of 6.0 or better with no band below 5.5; OR
- PTE Academic Module with at least – Listening 47, Reading 48, Writing 51, Speaking 54; OR
- IBT (Internet-based TOEFL): overall score of 75 with a writing section minimum of 17; OR
- Cambridge Certificate of Proficiency in English (CPE): Grades A, B, C and C1; OR
- Cambridge Certificate of Advanced English (CAE): total score of 52 or over; OR
- English for Academic Purposes (EAP 2): Grade A or Grade B; OR
- Certificate IV in ESL.

The English language qualification must be less than two years old.

Applicants who have lived in an English-speaking country and do not automatically meet the above English Language proficiency requirements are considered case-by-case.

Applicants who do not meet the Institute's English proficiency requirements can be made a conditional offer, requiring them to complete an approved intensive English language course before commencing their course.

Mathematics requirements for Bachelor of Information Technology entry:

- Successful completion of a mathematics unit (or equivalent) from either a secondary or postsecondary education provider (the post-secondary education provider must be listed in the Australian Government Country Education Profiles), OR
- Successful completion of the KIHE's Tertiary Education Mathematics Test with a minimum score of 50%.

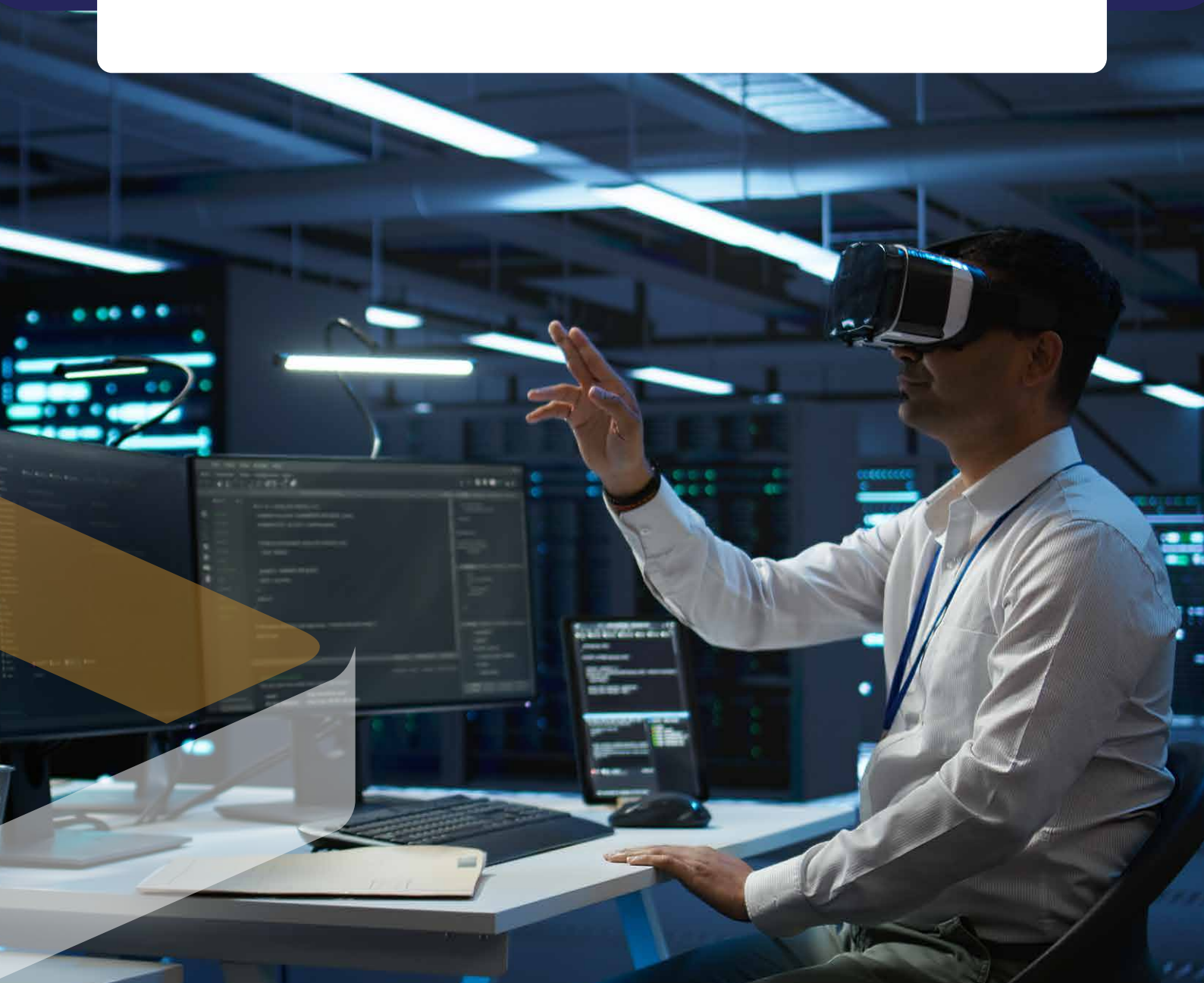
KIHE's Tertiary Education Mathematics Test covers numbers, algebra, data & graphs, probability, and statistics.

All students will attempt this test in the beginning of their first study period to identify those who may require additional support in mathematics.

Course Learning Outcomes

Upon successful completion of the Bachelor of IT, students will have developed:

- Broad and coherent knowledge of various information technology-related fields' theories, concepts, and principles.
- Broad and integrated working knowledge of established and emerging information technologies and their application in various professional settings.
- Integrated contemporary knowledge of information technology ethics, security, and governance standards to make sound and ethical decisions in unpredictable contexts.
- Communication skills to facilitate working effectively with individuals and teams, building successful professional relationships across a diverse group of stakeholders in local and global contexts.
- Skills and experience in applying established and emerging information technologies to solve complex real-world problems.
- Cognitive skills to undertake basic research and analyse and evaluate new information, concepts, and evidence from various scientific, business, industry, and academic sources.



At KIHE, we're not just about imparting knowledge; we're about shaping the future of professionals. Our graduate attributes are a testament to our vision and mission, outlining the essential qualities and capabilities you'll develop with us.



Become “Knowledgeable”: Our graduates are more than just skilled; they’re experts in their fields, equipped with deep, current knowledge and the ability to apply this expertise to the real world challenges.



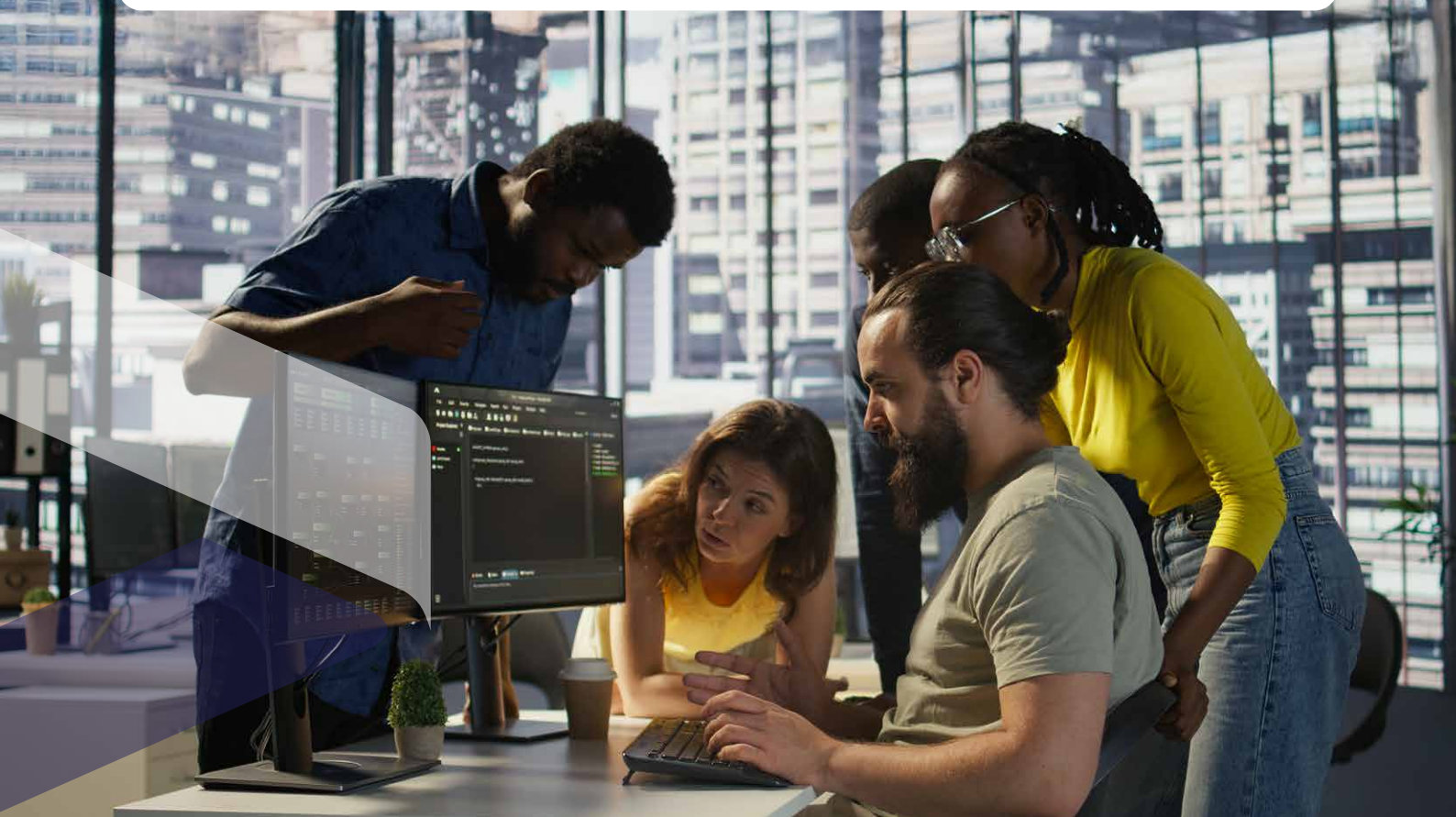
Be “Inspiring”: At KIHE, we nurture leaders who think critically and continue learning throughout their lives, inspiring and influencing those around them.



Embrace “Humane” Values: Our graduates stand out for cultural diversity, including First Nations Peoples. This makes them adept at meaningful, impactful collaboration.



Uphold “Ethical” Standards: We graduate consummate professionals who are not only accountable for environmentl, social and governance issues but also navigate these challenges with steadfast integrity.



What you will Study

Code	Name	Credit Points	Type	Pre-requisite(s)
Year 1				
BUS501	Communication Skills	10	Core	Nil
ICT501	Foundations of Information Technology	10	Core	Nil
ICT502	Principles of Programming	10	Core	Nil
	Elective 1 (E1)			
ICT503	Database Design and Development	10	Core	Nil
ICT504	Networking Systems	10	Core	Nil
ICT505	Cyber Security	10	Core	ICT501, ICT504 (Co-req)
	Elective 2 (E2)			
Year 2				
ICT601	Data Analytics	10	Core	ICT502
	Elective 3 (E3)			
	Elective 4 (E4)			
ICT604	Systems Analysis and Design	10	Core	ICT501
ICT605	Cloud Computing	10	Core	ICT504
ICT606	IT Project Management	10	Core	ICT604
ICT607	IT Ethics and Professional Practice	10	Core	ICT501
	Elective 5 (E5)			
Year 3				
ICT701	User Experience Design	10	Core	ICT604
ICT702	IT Governance and Risk Management	10	Core	ICT505, ICT607
	Specialised Elective 1 (SE1)			
PRJ701	IT Capstone Project 1	10	Core	ICT606, ICT607 & Completion of at least 16 units
ICT703	Emerging Topics in Information Technology	10	Core	ICT607 & Completion of at least 16 units
	Specialised Elective 2 (SE2)			
	Specialised Elective 3 (SE3)			
PRJ702	IT Capstone Project 2	10	Core	PRJ701

Code	Name	Credit Points	Type	Pre-requisite(s)
Recommended Electives				
MAT501	Statistics (E1)	10	Elective	Nil
BUS502	Design Thinking (E2)	10	Elective	BUS501
ICT602	Web Application Development (E3)	10	Elective	ICT502, ICT503
ICT603	Artificial Intelligence (E4)	10	Elective	ICT501, ICT502
BUS601	Digital Transformation and Innovation (E5)	10	Elective	ICT501

Code	Name	Credit Points	Type	Pre-requisite(s)
Specialised Electives - Cyber Security Stream				
ICT711	Advanced Cyber Security (SE1)	10	Elective	ICT505, ICT607
ICT712	Cloud Security and Privacy (SE2)	10	Elective	ICT505, ICT605, ICT607
ICT713	Digital Forensics (SE3)	10	Elective	ICT505, ICT607

Code	Name	Credit Points	Type	Pre-requisite(s)
Specialised Electives - Data Analytics Stream				
ICT721	Big Data (SE1)	10	Elective	ICT601, ICT605
ICT722	Advanced Data Analytics (SE2)	10	Elective	ICT601, ICT607
ICT723	Data Visualisation (SE3)	10	Elective	ICT601

Careers

The future for careers in Information Technology (IT) in Australia and Southeast Asia appears exceptionally bright, driven by rapid technological advancements and digital transformation across industries. The region's strong focus on innovation, coupled with governments' support for digital initiatives, signifies a robust demand for IT professionals. In Australia, the continued growth in tech roles, highlighted by reports like Australia's Digital Pulse, underscores the sector's resilience and expansion, forecasting an increasing need for skilled professionals in cybersecurity, data analysis, AI, and cloud computing.

Similarly, Southeast Asia's burgeoning digital economy, fueled by a young, tech-savvy population and growing internet penetration, presents vast opportunities for IT careers. The region is witnessing a surge in e-commerce, fintech, and digital services, leading to a sharp demand for IT expertise to drive innovation and secure digital infrastructures. As both regions continue to evolve technologically, the need for IT professionals who can navigate the complexities of the digital landscape, innovate, and ensure cyber security will remain a cornerstone of economic growth and development, promising a dynamic and rewarding career path in IT.



Credit for Prior Learning

Granting credit for prior learning ensures that students commence study at a level that appropriately recognises their prior learning experiences and are not required to repeat equivalent learning successfully undertaken in another context.

Kingsford Institute of Higher Education has developed open and accessible guidelines to grant credit towards a course of study based on prior learning, whether from formal studies or professional work experience. You can access this policy on the page “About Us”.

This policy maximises the credit students can gain for learning already undertaken and preserves the integrity of learning outcomes or discipline requirements of the award to which it applies.

This policy incorporates the best practice principles outlined in the AQF Qualifications Pathways Policy.





All relevant tuition fees and charges for the various course levels offered by KIHE are outlined below, with all fees presented in Australian Dollars.

KIHE ensures access to focused IT resources for learning, including campus computers available for student use and access to vital online systems or applications. It's expected that all students will have access to personal computers to support their ongoing studies.

Please note that tuition fees are subject to review and may change during your course. Currently enrolled students will be notified in writing of any tuition fee changes for the upcoming calendar year by November of the preceding year.

You have been provided with our Statement of Tuition Protection, also available at www.kihe.edu.au/aboutus/policies.

For Domestic students, the fee for each unit is \$2,000.00 (10 credit point units). For International students, the fee per unit is \$2,250.00 (10 credit point units).

The Total Course Fees

Domestic Students = \$48,000

International Students = \$56,745

Other fees:

The following fees may apply in certain circumstances during your course:

Type of fee	Amount	When Charged
Application fee	\$250	On application
Refund administration fee	\$550	If visa application unsuccessful
Reissue lost certification	\$55	On request



KIHE

Kingsford Institute
of Higher Education

Provider ID: PRV14399 | **CRICOS Code:** 04352K

 1800 544 300

 Level 2, 545 Kent St, Sydney NSW 2000

 info@kihe.nsw.edu.au

 www.kihe.nsw.edu.au

Scan for more info

